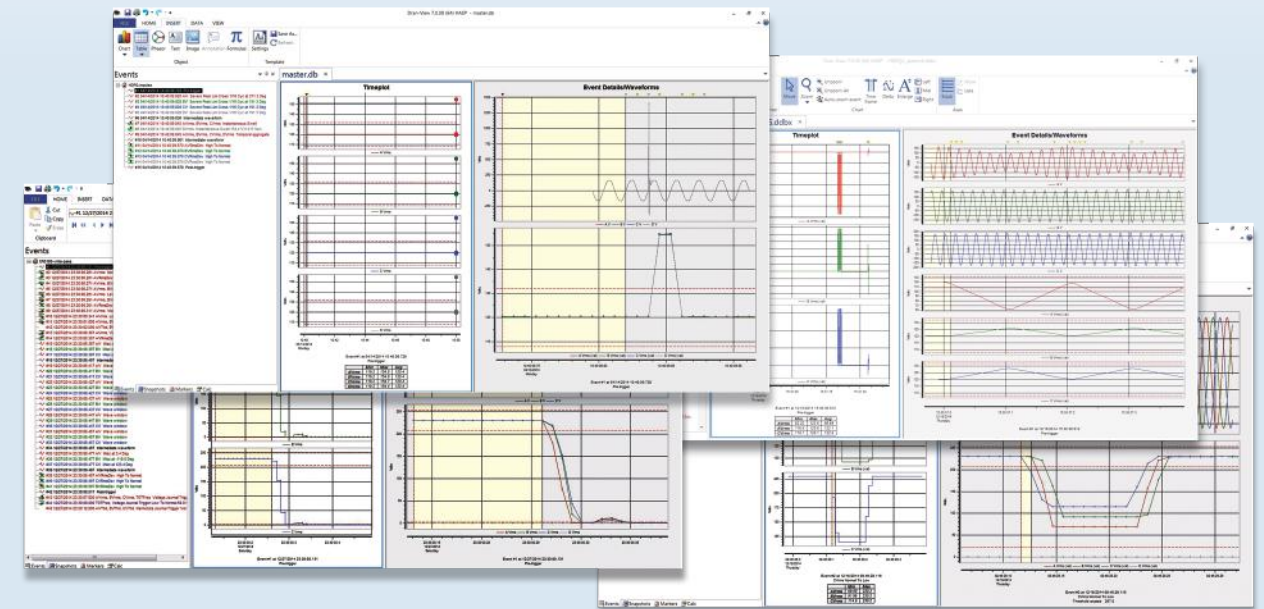


Description	Dran-View 7 Pro	Dran-View 7 Enterprise
<b>User Interface</b>		
Scrollable (rubber band) chart axis	●	●
Diagrams: trend, waveform, magnitude/duration and DFT	●	●
Chart area marking tool	●	●
Format templates provides unified layout	●	●
Event filtering/sorting	●	●
Drag and drop charts, axis etc.	●	●
New Navigation Task Bar	●	●
64 Bit Program	●	●
Insert pictures and photos		●
Floating notations (balloons) with user defined text or data		●
Customizable toolbars, keyboard shortcuts and menus		●
<b>File and System Features</b>		
Faster file loading than with Dran-View 6	●	●
Support for large data files	●	●
New effective file compression (50% reduction in size)	●	●
Automatic updates via Internet	●	●
Compatible with Dran-View 6	●	●
Read data from protection relays (COMTRADE files)		●
Reads tabulated text files		●
Remove partial data from a measurement file		●
<b>Report Writing</b>		
Power quality and demand/energy reports	●	●
Monitoring mode specific reports	●	●
Integrated text editor (RTF-editor)	●	●
Snapshots / Bookmarks		●
Add selected events to report		●
Add selected trends to report		●
Reports against EN, IEC, G5/4, NVE standards		●
<b>Multi-site Capabilities</b>		
Presentation of up to 16 simultaneous data sets		●
Multi-site events filter (find events occurring at several locations)		●
Multi-site time synchronization & mathematical comparisons between data sets		●
Mathematical comparisons between data sets (differences, etc.)		●
<b>Rescue Kit (Data Repair)</b>		
Adjust timestamps	●	●
Invert current probes	●	●
Change scaling factors	●	●
Change connection type	●	●
<b>Mathematical Features</b>		
Calculate trends and harmonic parameters from waveform data		●
Separate harmonic scaling for voltage, current and power	●	●
Enhanced DFT features for selecting and analyzing harmonic spectra in the signal		●

# Dran-View 7

*The Industry Leading Power Management Software Tool*





## Why Choose Dran-View 7?

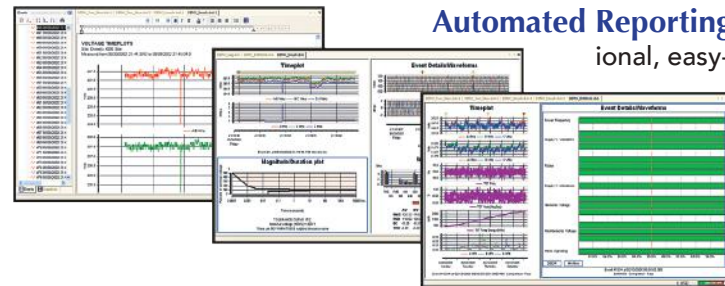
Dran-View 7 software is a Windows based software package that enables power professionals to simply and quickly visualize and analyze power quality/energy monitoring data. Now in its 7th major revision, Dran-View 7 offers the powerful feature set that you expect from Dran-View, but now it has a more modern appearance and a simpler user interface.



Also, Dran-View 7 is a true 64 bit program that can take full advantage of the speed and file size capabilities of the latest computer/Windows operating systems, but remains compatible with older 32 bit computers.

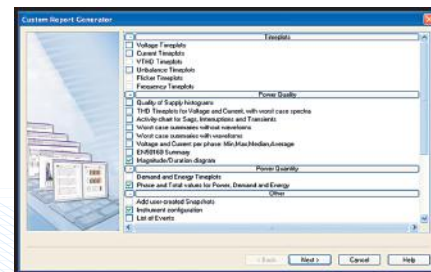
- Dran-View 7 features a new, intuitive, easy-to-use ribbon bar that enhances even the first-time user's experience.
- The software has been optimized for speed and can accommodate large data sets.
- All measured and calculated parameters are sorted into different categories, making it easy to find and select the data you want to display. Dran-View even presents explanatory text in many different languages to support graphic views.
- Scrollable (rubber band) chart axis makes it easy to pan and zoom diagrams to pinpoint problems for quick resolution.
- Flexibility has been integrated throughout the software – users can customize both the appearance and user interface.
- Dran-View 7 contains unique analysis support, such as the harmonic demo tool, separate harmonics scaling for voltage, current and power, and a rescue kit to correct timestamps, reverse direction of probes, adjust incorrect connection types, or change scaling factors without recollecting data.
- Any data source can be exported to PQDIF format (IEEE 1159.3), and Dran-View Enterprise can even import COMTRADE files from protection relays and other devices.

## Reporting

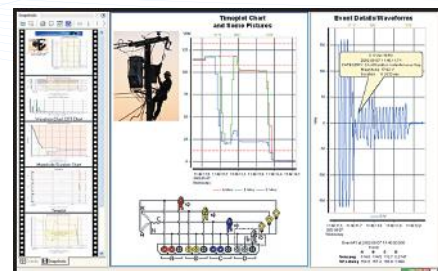


**Automated Reporting** – Using simple wizards, you can format data into professional, easy-to-understand reports. Dran-View allows the user to select the measurement mode (such as Inrush or Fault Recording), and automatically selects the relevant graphics and reports for distribution.

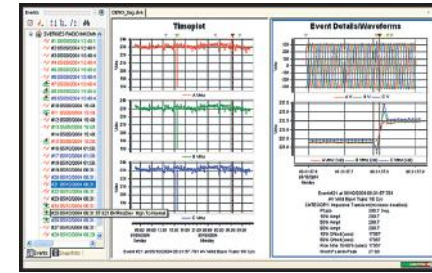
**Design Custom Reports** – Choose from over 20 different reporting options and have the ability to modify diagrams, data listings, and standards to fit your individual reporting requirements. Options include fixed or user-selected timeplots, ITIC chart, worst-case summaries, and more. You can even define your own standards. A single click also lets you bookmark any report for future reference.



**Edit Reports** – Dran-View has a built-in text editor that enables you to easily insert pictures and text notations, delete events, rearrange diagrams and adjust the layout. The camera function in the Enterprise version will also allow you to add photos, charts, and waveforms into reports.

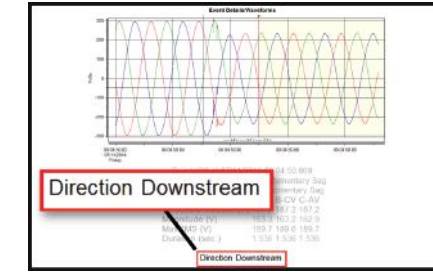


## Visualization



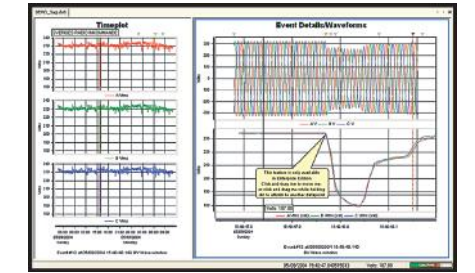
### Three Pane Window

View events, timeplots, and waveforms simultaneously and interactively to quickly diagnose power quality problems. Move your mouse over events to expand the graphics for more detail or to access different channels.



### AnswerModules

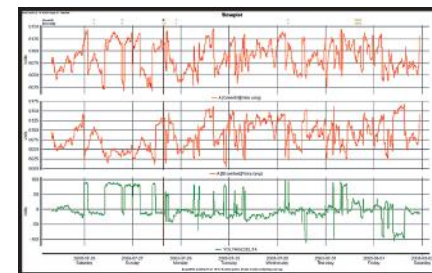
AnswerModules® are algorithms that are included in some Dranetz instruments that can automatically identify PQ events and their source. Dran-View displays Sag Directivity and Capacitor Switching AnswerModule information that was characterized by the Dranetz HDPQ family of instruments.



### Tailored Presentation Option

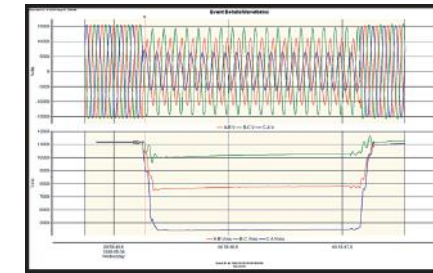
Chart, object, area, site, and other exclusive tools are available to help you select the most appropriate diagrams for the project. Tools such as zoom, pan, area marker, harmonic scaling, and event removal are among more than 50 available options.

## Analysis



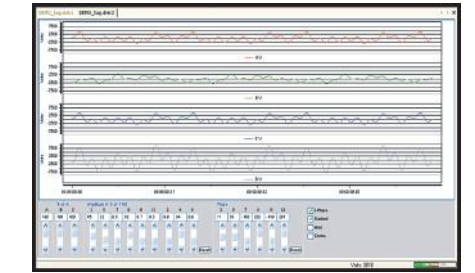
### Events Categorized, Sorted and Grouped

Dran-View's workspace bar not only categorizes all power quality events, but it can also display data through event-data filtering, subset display, sorting, branching, or via custom search. You can even create formulas to perform calculations between sites.



### Evaluate Data from Various Formats

Any data source can be exported to IEEE 1159.3 PQDIF format. COMTRADE files and tabulated text files with waveforms or trends can also be imported into Dran-View Enterprise, including industry standard PQDIF and COMTRADE formats from other instruments.



### Harmonics Tools

In addition to the unique Harmonic Demo Tool, Dran-View includes a harmonics/timeplot calculator used to calculate parameters, such as sliding RMS, harmonics, power, and symmetrical components.

## Rescue Kit Included (Data Repair)

Setup installation errors can be corrected even after the data has been recorded, to include the following:

- Adjust timestamps
- Invert current probes
- Change scaling factors
- Change connection type

## Dran-View 7 is compatible with these products:

- Dranetz HDPQ® Family
- PowerXplorer® PX5
- PowerXplorer® PX5-400
- PowerGuide® 4400
- PowerVisa®
- Energy Platform® EP1
- MAVOWATT brand of products listed above
- Encore Series® and Signature System® DataNodes
- PowerPlatform® 4300
- PP1 instruments
- Dranetz-BMI 658
- 3rd party instruments